



Please note that Cypress is an Infineon Technologies Company.

The document following this cover page is marked as “Cypress” document as this is the company that originally developed the product. Please note that Infineon will continue to offer the product to new and existing customers as part of the Infineon product portfolio.

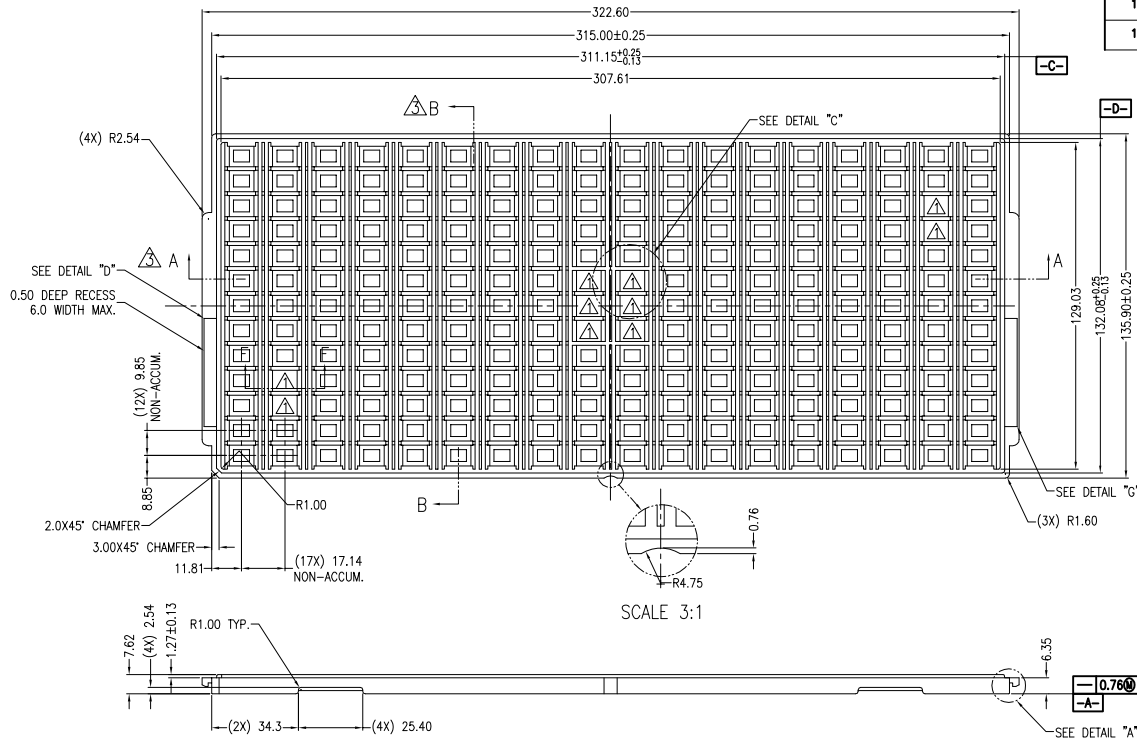
Continuity of document content

The fact that Infineon offers the following product as part of the Infineon product portfolio does not lead to any changes to this document. Future revisions will occur when appropriate, and any changes will be set out on the document history page.

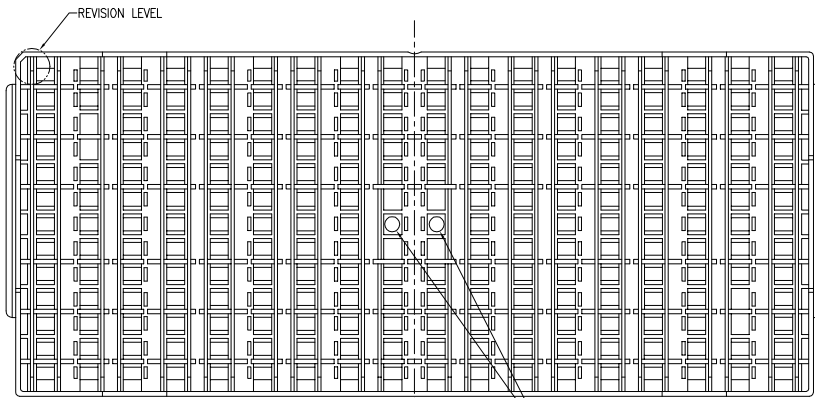
Continuity of ordering part numbers

Infineon continues to support existing part numbers. Please continue to use the ordering part numbers listed in the datasheet for ordering.

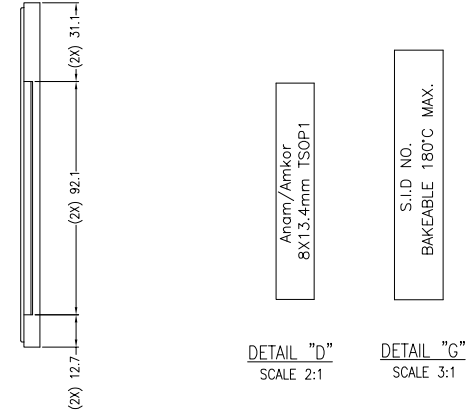
REVISIONS						
PAGE	ZONE	REV	ECN	DESCRIPTION	DATE	APPROVER
1	-	**	47386	NEW RELEASE	11/25/96	
1	-	*A	3164250	UPDATE DRAWING CHANGE DRAWING TEMPLATE	02/10/11	
1	-	*B	3532453	REMOVE LAYER COLORS ON PDF FILE.	02/23/12	
1	-	*C	4693017	UPDATE DRAWING TEMPLATE	03/18/15	



SCALE 3:1

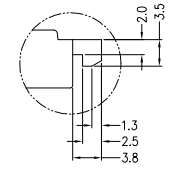


BOTTOM VIEW

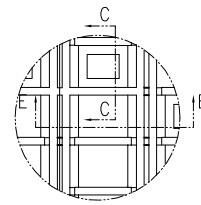


DETAIL "D"
SCALE 2:1

DETAIL "G"
SCALE 3:1



DETAIL "A"
SCALE 6:1

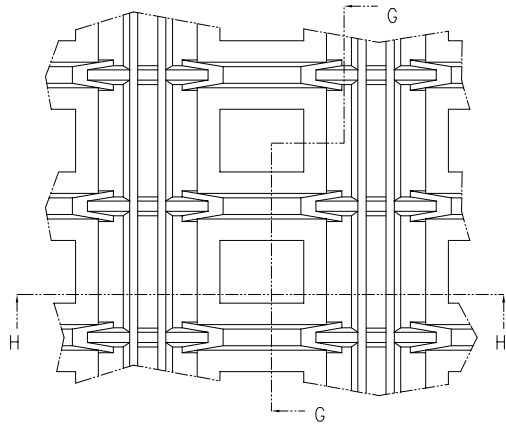


DETAIL "C"
SCALE 2:1

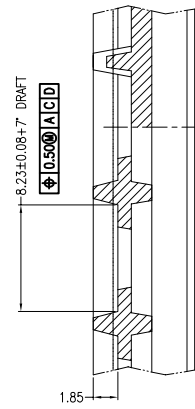
- △ VACUUM PICKUP CELL LOCATIONS
SEE DETAIL ON SHEET #2.
- 2 CONTROLLED DIMENSIONS AND TOLERANCES ARE IN MILLIMETERS.
SEE SHEET #2.
- △ INTERPRET DIMENSIONS AND TOLERANCES
IN ACCORDANCE WITH ANSI Y14.5M-1982.
- 5 THERE ARE 234 UNITS PER TRAY

BAKEABLE	PES	150°C	1244075
DESCRIPTION	MATERIAL	TEMP(°C)	S.I.D. NO.

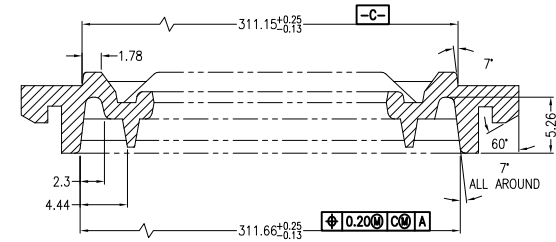
UNLESS OTHERWISE SPECIFIED		DESIGNED BY	DATE		
ALL DIMENSIONS ARE IN MILLIMETERS STANDARD TOLERANCES ON:		DRAWN	DATE		
DECIMALS	ANGLES	XVC	03/18/15		
XX ± 0.25	± 0.5	CHK BY	DATE		
XXX ± 0.100		ECVI	03/18/15		
XXXX ± 0.1000		APPROVED BY	DATE		
MATERIAL	SEE NOTE	QAD	03/18/15	TITLE	28LD TSOP TRAY 8 X 13.4MM (ANAM)
FINISH	SEE NOTE	UYO	03/18/15	SIZE	A
				PART NO.	TZ8134A
				DWG NO.	51-52026
				REV	*C
				DO NOT SCALE	SHEET 1 OF 2



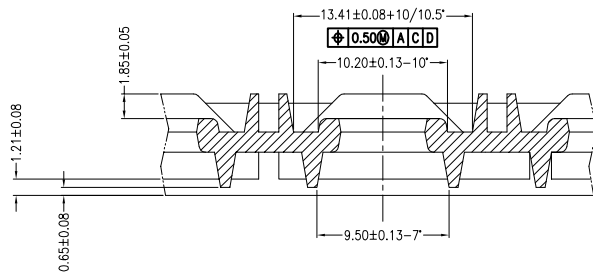
NEST TOP VIEW



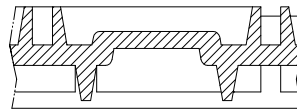
SECTION "G-G"
ROTATED 90° CCW



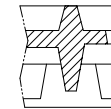
SECTION "A-A"
SCALE 4:1



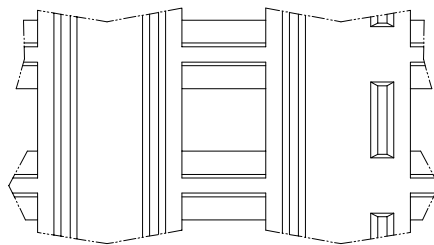
SECTION "H-H"



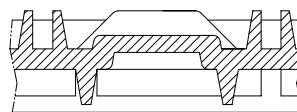
SECTION "E-E"
CENTER CLOSED NESTS



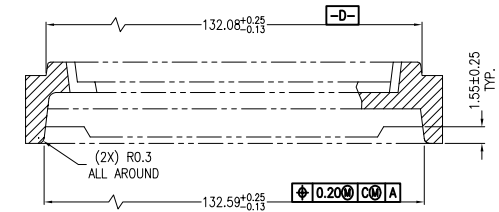
SECTION "C-C"
JUMP-OVER NOTCHES DETAILS
ROTATED 90° CW



NEST BOTTOM VIEW



SECTION "F-F"
SEMI-CLOSED NESTS



SECTION "B-B"
(ROTATED 90° CW) SCALE 4:1

- NOTES:
 1. ALL DRAFT ANGLES ARE PER SIDE.
 2. UNLESS OTHERWISE SPECIFIED BREAK ALL SHARP CORNERS.

UNLESS OTHERWISE SPECIFIED		DESIGNED BY	DATE	CYPRESS COMPANY CONFIDENTIAL	
ALL DIMENSIONS ARE IN MILLIMETERS		DRAWN	DATE	TITLE 28LD TSOP TRAY 8 X 13.4MM (ANAM)	
STANDARD TOLERANCES ON:		XVC	03/18/15		
DECIMALS	ANGLES	CHK BY	DATE	SIZE	PART NO.
.XX ± 0.25	± 0.5	ECVI	03/18/15	A	TZ8134A
.XXX ± 0.130		APPROVED BY	DATE	DWG NO	REV
.XXXX ± 0.1300		QAD	03/18/15	51-52026	*C
MATERIAL	SEE NOTE	APPROVED BY	DATE		
		UYO	03/18/15		
FINISH	SEE NOTE			DO NOT SCALE	SHEET 2 OF 2